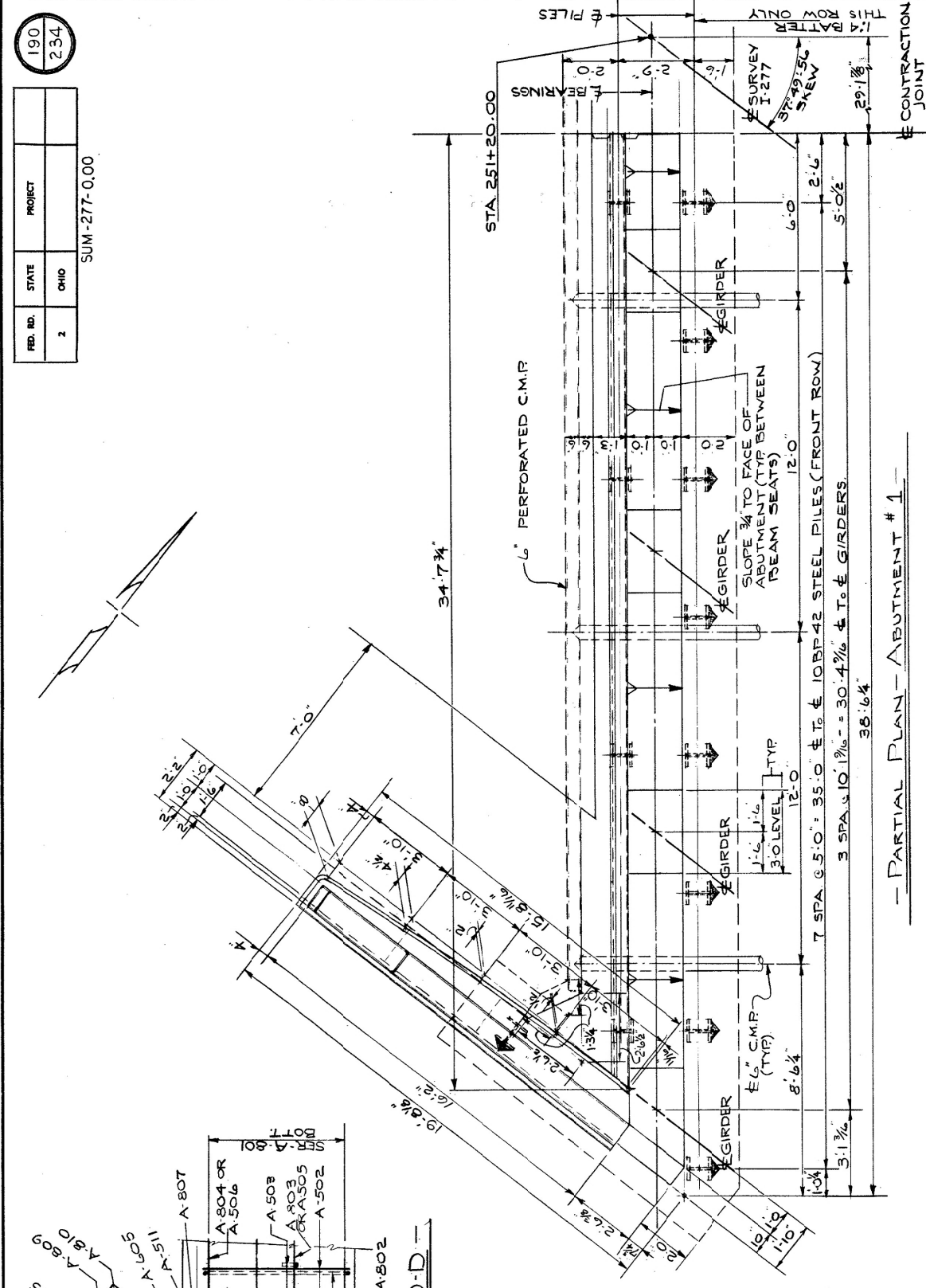
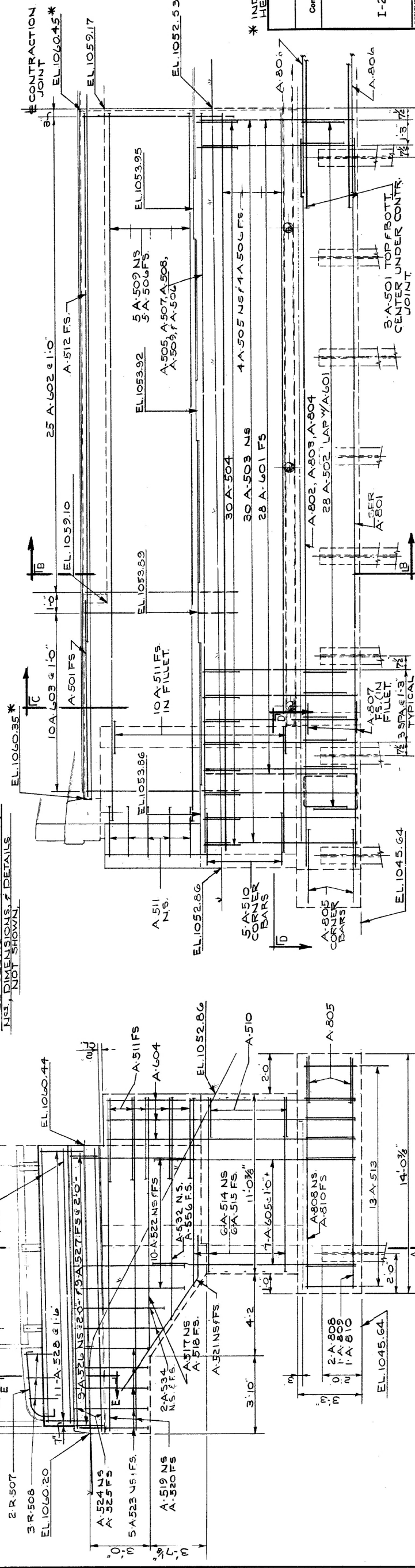




SUM-277-0.00



- PARTIAL PLAN - ABUTMENT # 1

ELEVATION

*INDICATES ELEVATIONS GIVEN TO

STATE OF OHIO
DEPARTMENT OF HIGHWAYS
BUREAU OF BRIDGES

BEISWENGER, HOCH & ARNOLD
Consulting Engineers
Akron, Ohio

277
ABUTMENT NO. 1 DETAILS
BRIDGE NO. SUM-277-0000
OVER RELOCATED S.R. 8
SUMMIT COUNTY

-277- SUMMIT COUNTY

STA. 251-17.15 TO STA. 256-78.35

DESIGNED	DRAWN	TRACED	CHECKED	REVIEWED	DATE	REVISED
KJ	MF		CL	RDA	6-30-65	

↑
- ELEVATION - SOUTH WINGWALL - ABOUT #1 -